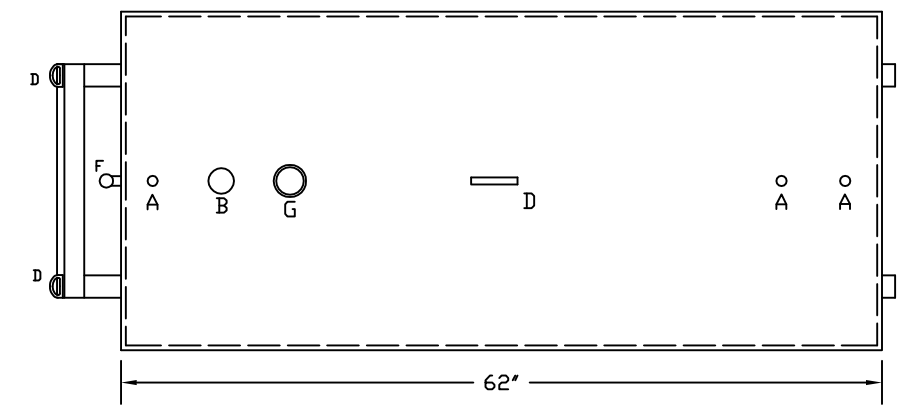
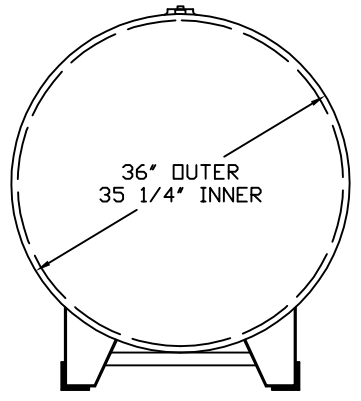
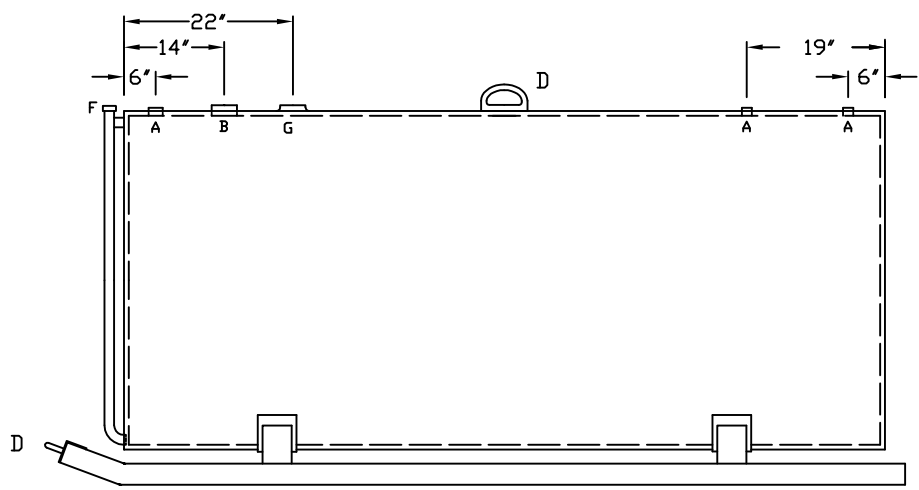


QUAN.	STOCK #	DESCRIPTION	QUAN.	STOCK #	DESCRIPTION	QUAN.	STOCK #

**SPECIFICATIONS & CONSTRUCTION INFORMATION**  
 MODEL: SKDW-270-12 SKID TANK  
 DESCRIPTION: ABOVEGROUND, DOUBLE WALL STEEL STORAGE TANK  
 INNER TANK: 12 GAUGE  
 OUTER TANK: 12 GAUGE  
 OPENINGS: MINIMUM 3-2" FNPT COUPLINGS  
 1-3" FNPT COUPLINGS  
 1-3" FNPT FLANGE  
 CONSTRUCTION: WELDED USING UL-142 STANDARDS  
 FINISH: SURFACE PREP: SPCC SP-3  
 ONE SPRAY COAT OF RED PRIMER  
 FINISH ENAMEL COAT IS OPTIONAL

GOLDSBORO, NC  
 1-919-734-8328



- LEGEND**
- A - 2" FNPT COUPLING
  - B - 3" FNPT COUPLING
  - D - FORGED LIFT LUG
  - F - 2" SCH 40 PIPE W/ CAP, INTERSTICE INSPECTION
  - G - 3" FNPT FLANGE

TURNER TANKS SKDW-270-12

DWG #: SKDW-270-12	SCALE: NONE	DATE: 02/25/05	REVISION:	APPROVED:	APPROVAL DATE:
--------------------	-------------	----------------	-----------	-----------	----------------