

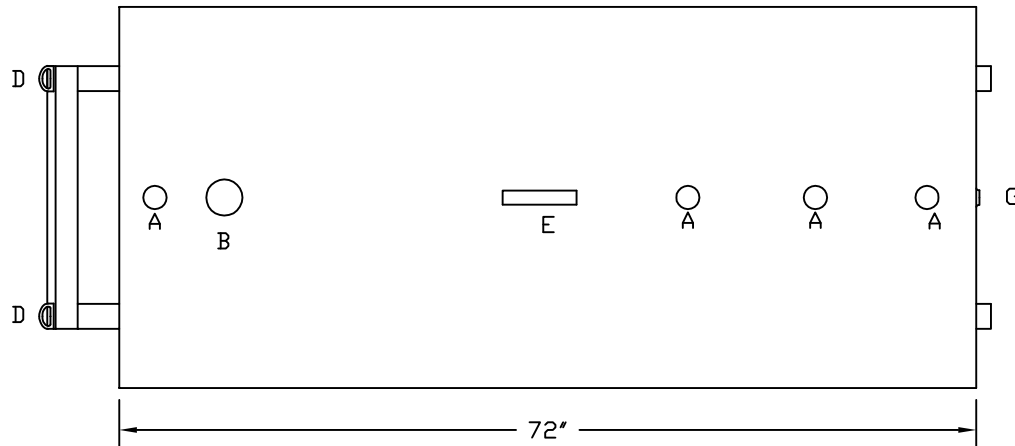
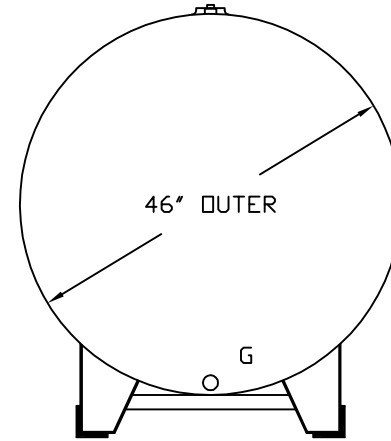
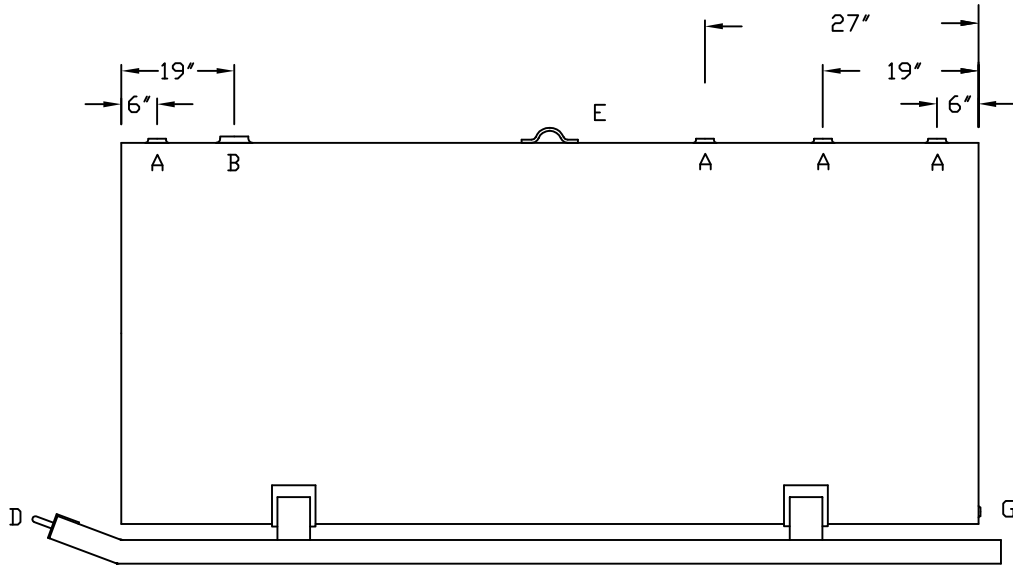
SPECIFICATIONS & CONSTRUCTION INFORMATION

MODEL: SK-525-12 SKID TANK  
 DESCRIPTION: ABOVEGROUND, STEEL STORAGE TANK  
 CONSTRUCTION: WELDED USING UL-142 STANDARDS  
 FINISH: SURFACE PREP: SPCC SP-3  
 ONE SPRAY COAT OF RED PRIMER  
 FINISH ENAMEL COAT IS OPTIONAL

TANK: 12 GAUGE

OPENINGS: MINIMUM 4-2" FNPT FLANGE  
 1-4" FNPT FLANGE  
 1-3/4" FNPT FLANGE W/STEEL PLUG

GOLDSBORO, NC  
 1-919-734-8328



LEGEND

- A - 2" FNPT FLANGE
- B - 4" FNPT FLANGE
- D - FORGED LIFT LUG
- E - LIFTING LUG
- G - 3/4" FNPT FLANGE W/STEEL PLUG

TURNER TANKS SK525-12

DWG #: SK-525-12

SCALE: NONE

DATE: 12/18/06

REVISION:

APPROVED:

APPROVAL DATE: