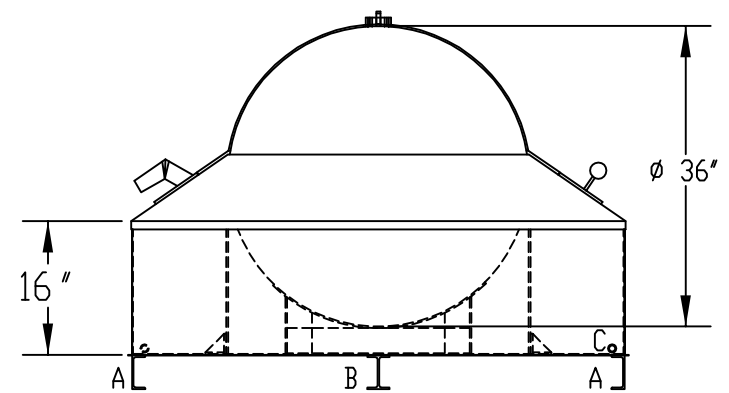
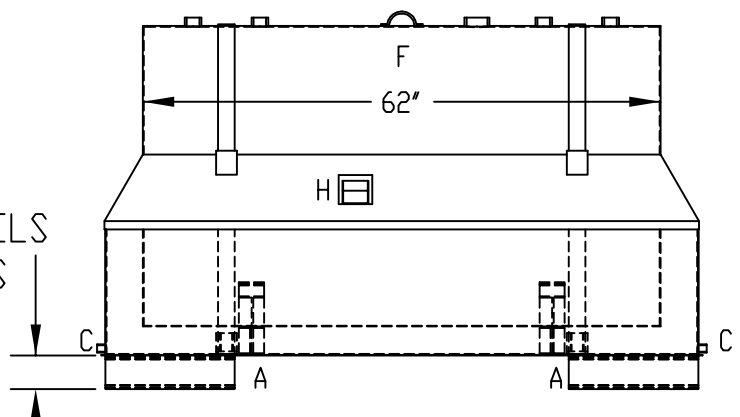


- BRIEF LEGEND:**
 A-(4) 4" CHANNEL
 B-(2) 4" I-BEAM
 C-(2) 3/4" FNPT FLANGE
 D-(4) 2" FNPT FLANGE
 E-(1) 3" E.VENT FLANGE
 F-(1) LIFTING LUG
 G - (1) LIQUID INDICATOR FLOAT
 H - (1) CONTAINMENT VENTING

SOME DETAILS ARE OMITTED FOR CLARITY OF RAINSHIELD

FOR FULL CONSTRUCTION DETAILS AND SPACING OF "A" & "B", REF. DRAWING DIKE INFORMATION



REF. TO: STANDARD DIKES
 DATE: 06/23/08

TITLE: **SC-270-12P W/ RS**

DESCRIPTION: SINGLE WALL, STEEL ABOVEGROUND TANK SECURED WITH ANTI-FLOTATION STRAPS IN A STEEL DIKE; A REMOVABLE RAINSHIELD IS OPTIONAL



CONSTRUCTION: TANK AND DIKE ARE OF WELDED CONSTRUCTION. OPTIONAL RAINSHIELD IS MECHANICALLY ATTACHED TO THE DIKE.

FINISH: SURFACE PREP. IS SSPC-3; UNDERCOAT IS AN INDUSTRIAL PRIMER AND FINISH COAT IS AN INDUSTRIAL ENAMEL.

CAPACITY: 290 GALLONS APPROX. WEIGHT: 680 lbs ± 5%

DWG BY: AH

SCALE: 1:16