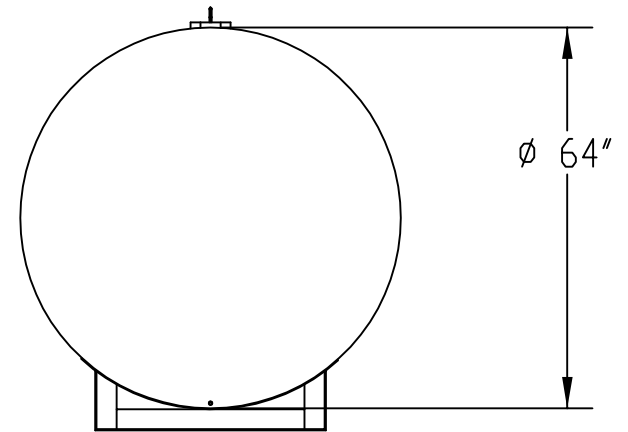
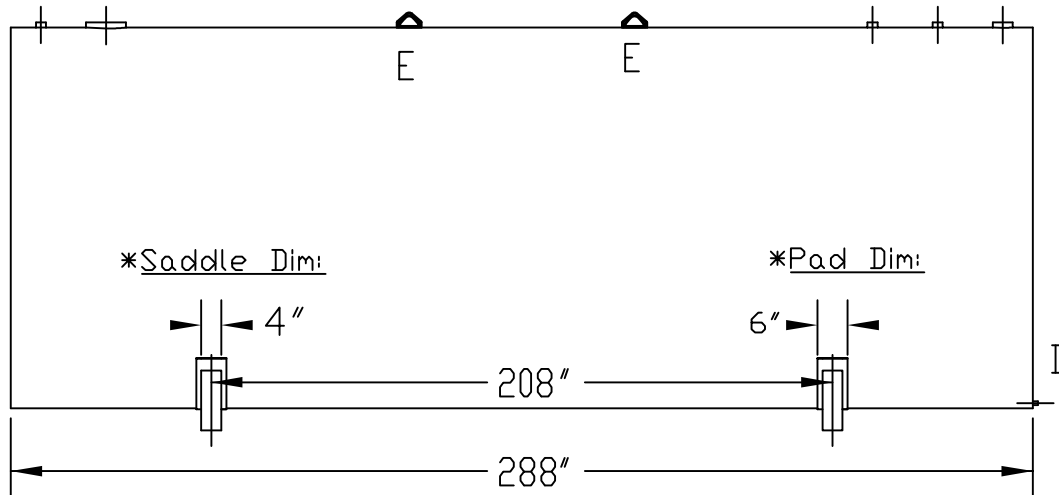


\*Typical  $\frac{1}{8}$ " thick pad, fully sealed weld between tank and saddle.



REF. TO: STANDARD TANK  
DATE: 05/20/08

DWG BY: AH

TITLE: **AH-4000/64-7P**

DESCRIPTION: ABOVE GROUND, SINGLE WALL  
7 GA. STEEL STORAGE TANK

FINISH: SURFACE PREP: SPCC SP-3; ONE  
SPRAY COAT OF PRIMER; OPT FINISH  
APPROX. WEIGHT: 3,350 lbs ± 5%

CAPACITY: 4,010 GALLONS



LEGEND: ID - (QTY. OF OPENINGS) PART

A - (3) 2" FNPT FLANGE      D - (1)  $\frac{3}{4}$ " FNPT FLANGE  
B - (1) 8" E.VENT FLANGE    E - (2) FORGED LIFT LUG  
C - (1) 4" FNPT FLANGE



1500 HWY 117 S.  
GOLDSBORO, NC 27530  
P: (919) 734 - 8328  
F: (919) 736 - 4550

SIGNED APPROVAL: