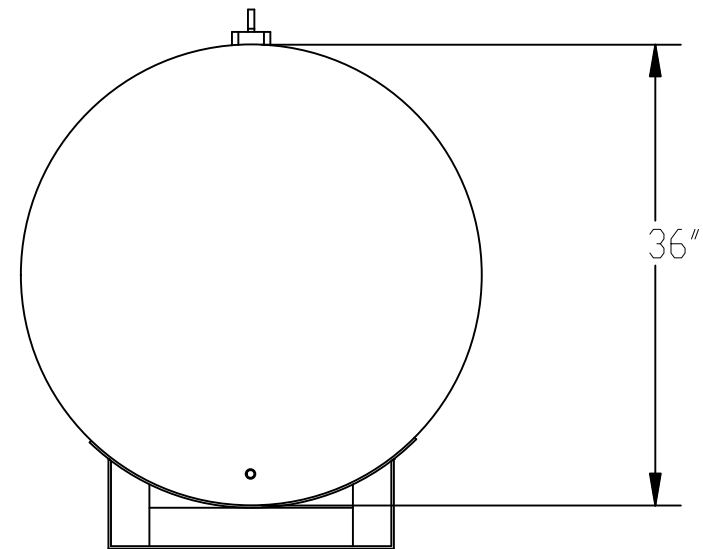
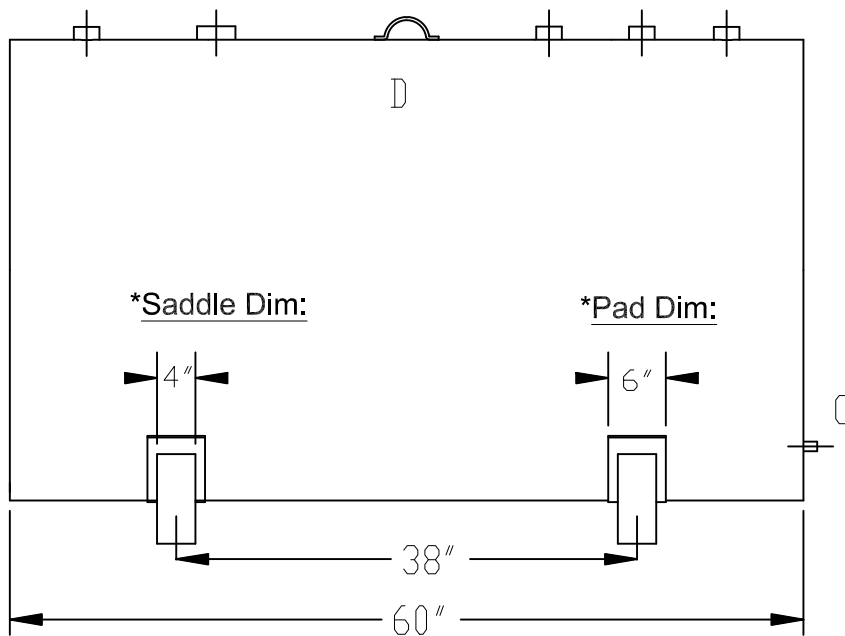
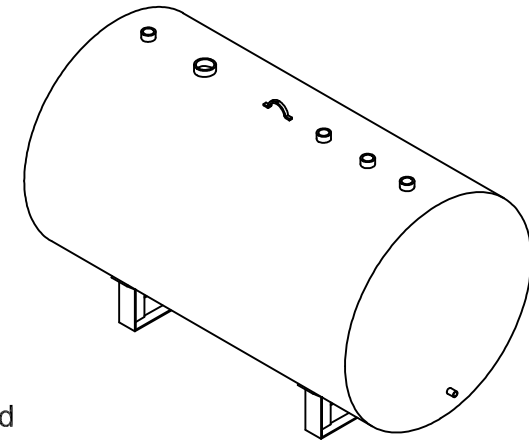


*Typical $\frac{1}{8}$ " thick pad,
fully sealed weld between tank and
saddle.



TITLE: AS-270-12P

DESCRIPTION: ABOVE GROUND, SINGLE WALL
12 GA. STEEL STORAGE TANK

FINISH: SURFACE PREP: SPCC SP-3; ONE
SPRAY COAT OF PRIMER; OPT FINISH
APPROX. WEIGHT: 340 lbs \pm 5%

CAPACITY: 273 GALLONS

LEGEND: ID - (QTY. OF OPENINGS) PART
A - (4) 2" FNPT FLANGE C - (1) $\frac{3}{4}$ " FNPT FLANGE
B - (1) 3" E.VENT FLANGE D - (1) LIFTING LUG



1500 HWY 117 S.
GOLDSBORO, NC 27530
(919) 734 - 8328
1-800-661-3767

Date- 2020

