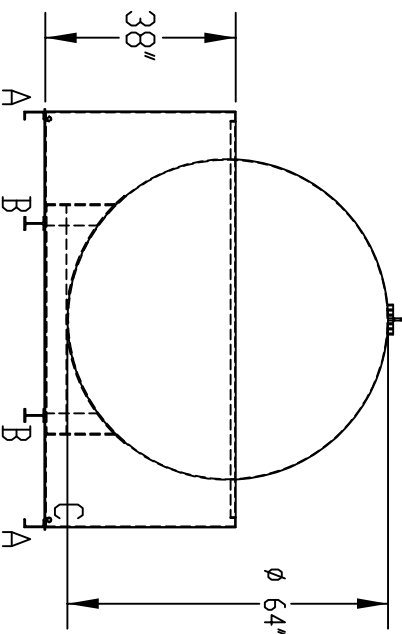
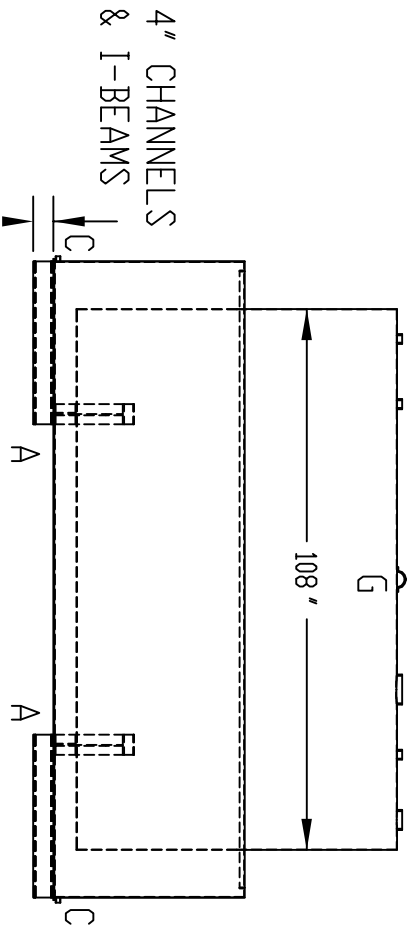


- BRIEF LEGEND:**
- A-(4) 4" CHANNEL
  - B-(2) 4" I-BEAM
  - C-(2) 3/4" FNPT FLANGE
  - D-(3) 2" FNPT FLANGE
  - E-(1) 4" FNPT FLANGE
  - F-(1) 6" EVENT FLANGE
  - G-(1) LIFTING LUG

FOR FULL CONSTRUCTION DETAILS AND SPACING OF "A" & "B", REF. DRAWING DIKE INFORMATION



REF. TO: STANDARD DIKES  
DATE: 06/23/08

DWG BY: AH

TITLE:

**SC-1500-7P WO RS**

SCALE: 1:32

DESCRIPTION:

SINGLE WALL, STEEL ABOVEGROUND TANK SECURED WITH ANTI-FLOTATION STRAPS IN A STEEL DIKE; A REMOVABLE RAINSHIELD IS OPTIONAL

CONSTRUCTION:

TANK AND DIKE ARE OF WELDED CONSTRUCTION. OPTIONAL RAINSHIELD IS MECHANICALLY ATTACHED TO THE DIKE.

FINISH:

SURFACE PREP. IS SSPC-3; UNDERCOAT IS AN INDUSTRIAL PRIMER AND FINISH COAT IS AN INDUSTRIAL ENAMEL.

CAPACITY:

1734 GALLONS

APPROX. WEIGHT: 3,275 lbs ± 5%



Underwriters  
Laboratories Inc.  
LISTED



1500 HWY 117 S.  
GOLDSBORO, NC 27530  
P: (919) 734-8328  
F: (919) 736-4550