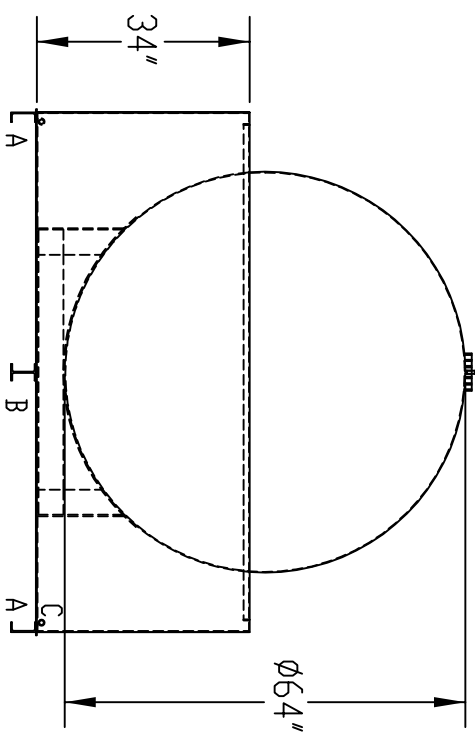
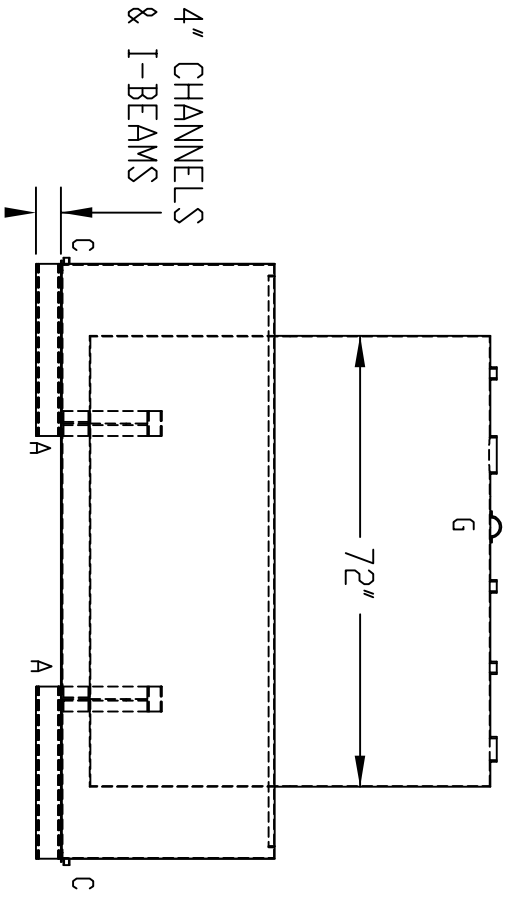
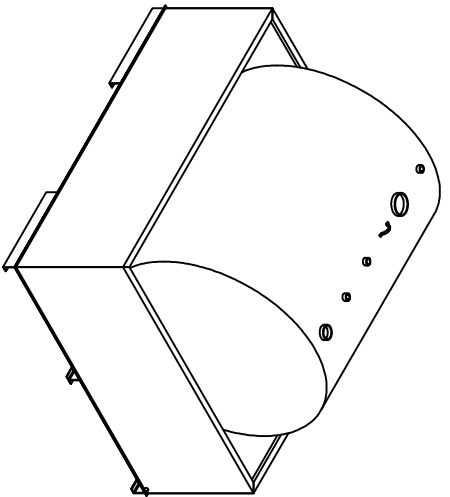


83" (DIKE)
84" (BASE)

- BRIEF LEGEND:**
- A-(4) 4" CHANNEL
 - B-(2) 4" I-BEAM
 - C-(2) 3/4" FNPT FLANGE
 - D-(3) 2" FNPT FLANGE
 - E-(1) 4" FNPT FLANGE
 - F-(1) 6" EVENT FLANGE
 - G-(1) LIFTING LUG

FOR FULL CONSTRUCTION DETAILS
AND SPACING OF 'A' & 'B', REF.
DRAWING DIKE INFORMATION



REF. TO: STANDARD DIKES
DATE: 06/23/08
DWG BY: AH

TITLE:
SC-1000-10P WO RS

SCALE: 1/24

DESCRIPTION:

SINGLE WALL, STEEL ABOVEGROUND TANK SECURED WITH ANTI-FLOTATION STRAPS
IN A STEEL DIKE; A REMOVABLE RAINSHIELD IS OPTIONAL

CONSTRUCTION:

TANK AND DIKE ARE OF WELDED CONSTRUCTION. OPTIONAL RAINSHIELD IS MECHANICALLY
ATTACHED TO THE DIKE.

FINISH:

SURFACE PREP IS SSPC-3; UNDERCOAT IS AN INDUSTRIAL PRIMER AND FINISH COAT IS AN
INDUSTRIAL ENAMEL.

CAPACITY:

1003 GALLONS

APPROX. WEIGHT: 2,035 lbs ± 5%



1500 HWY 117 S.
GOLDSBORO, NC 27530
P: (919) 734-8328
F: (919) 736-4550