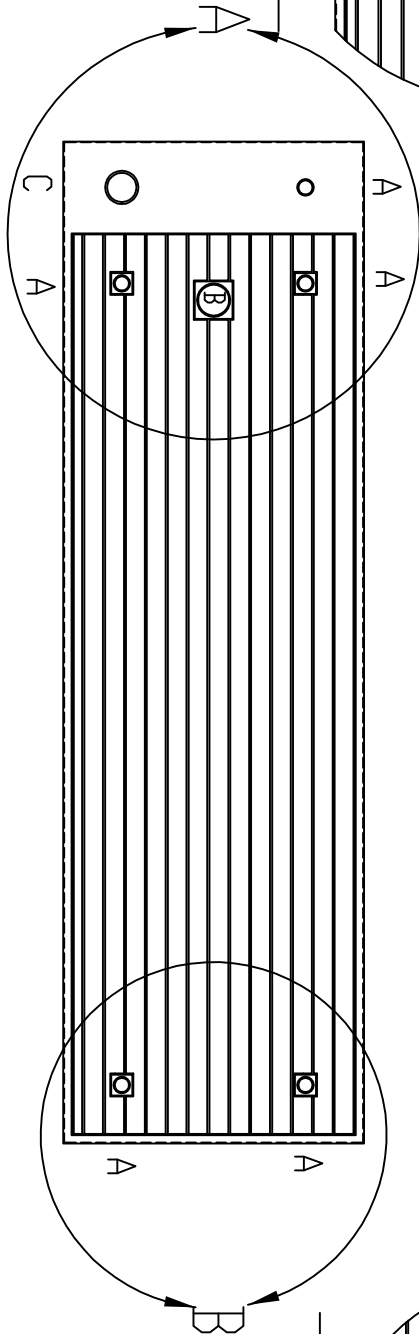
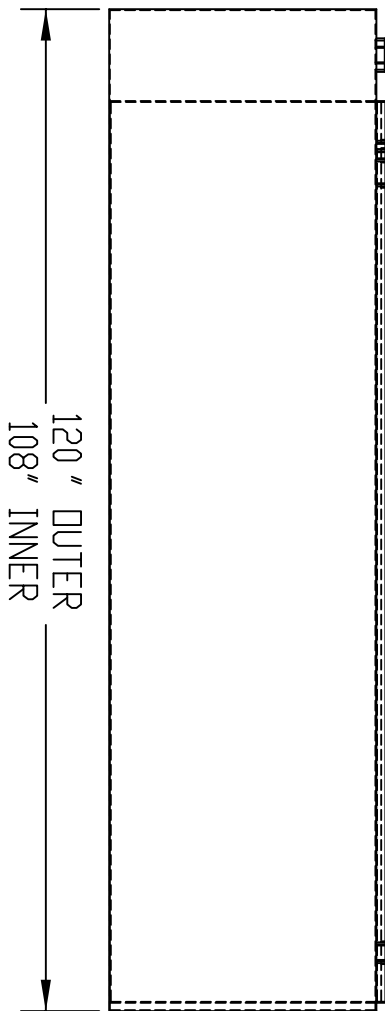


DETAIL A



DETAIL B



TANK IS SHOWN WITH BAR GRATING COVERING TOP OF INNER TANK

FITTING "B" IS ON CENTER AND 8" FROM SIDE OF TANK

DETAILS A & B ARE SCALED UP FOR REFERENCE

|  |   |           |   |
|--|---|-----------|---|
| DESCRIPTION:                                       | ABOVE GROUND DOUBLE TANK, STEEL STORAGE 500 GALLONS                     | REF. TO:  |   |
| MATERIAL:  | 10 GA. INNER/12 GA. OUTER   | DATE:     |   |
| CONSTRUCTION:                                      | WELDED USING UL-142 STANDARDS   | TITLE:    | LCW DW  |
| OPENINGS:  | 5-2" FNPT FLANGES<br>1-4" INNER EVENT FLANGE<br>1-4" OUTER EVENT FLANGE | SIZE:     | 500-10  |
| FINISH:  | SURFACE PREP, SPOC SP-3 DNE, SPRAY COAT OF RED PRIMER                   | LEGEND:   | A - 2" FLANGE<br>B - 4" INNER EVENT FLANGE<br>C - 4" OUTER EVENT FLANGE |
| TURNER TANKS;<br>GOLDSBORO, NC<br>(919) 734 - 8328 |   | SCALE:    | 1:32  |
|  |   | APPROVAL: |   |