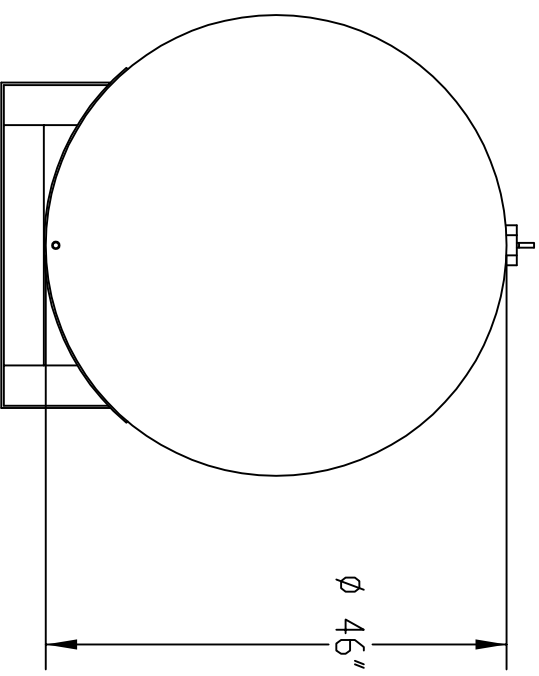


*Typical 1/8" thick pad, fully sealed weld between tank and saddle.



REF. TO: STANDARD TANK
DATE: 05/20/08

DWG BY: AH

TITLE:

AS-525-12P

SCALE: 1:32

LEGEND: ID - (QTY. OF OPENINGS) PART

- A - (4) 2" FNPT FLANGE
- B - (1) 4" EVENT FLANGE
- C - (1) 3/4" FNPT FLANGE
- D - (1) LIFTING LUG

DESCRIPTION:

ABOVE GROUND, SINGLE WALL
12 GA. STEEL STORAGE TANK
CAPACITY: 525 GALLONS

FINISH:

SURFACE PREP: SPCC SP-3; ONE
SPRAY COAT OF PRIMER; OPT FINISH
APPROX. WEIGHT: 470 lbs ± 5%

SIGNED APPROVAL:



Underwriters
Laboratories Inc.
LISTED



1500 HWY 117 S.
GOLDSBORO, NC 27530
P: (919) 734-8828
F: (919) 736-4650