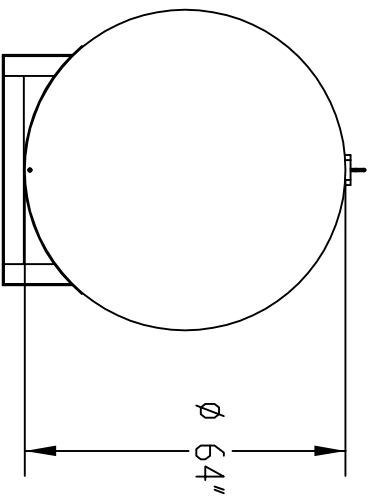
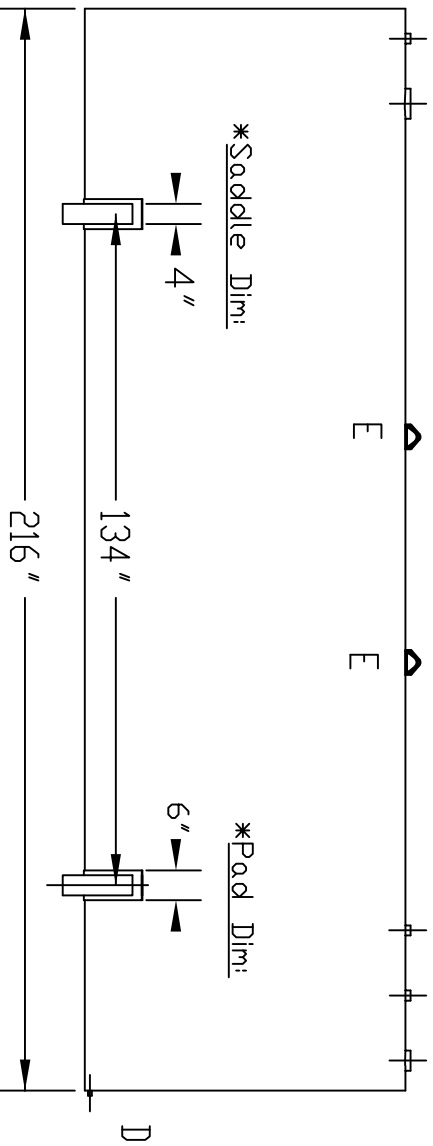


*Typical 1/8" thick pad, fully sealed weld between tank and saddle.



REF. TO: STANDARD TANK
DATE: 05/20/08

TITLE: **AS-3000-7P**

SCALE: 1:48

DESCRIPTION: ABOVE GROUND, SINGLE WALL 7 GA. STEEL STORAGE TANK
CAPACITY: 3,008 GALLONS
FINISH: SURFACE PREP, SPCC, SP-3; ONE SPRAY COAT OF PRIMER; OPT FINISH
APPROX. WEIGHT: 2,650 lbs ± 5%

Underwriters Laboratories Inc. LISTED

LEGEND: ID - (QTY, OF OPENINGS) PART
A - (3) 2' FNPT FLANGE
B - (1) 6' EVENT FLANGE
C - (1) 4' FNPT FLANGE
D - (1) 3/4' FNPT FLANGE
E - (2) FIRGED LIFT LUG

TURNER TANKS
1500 HWY 117 S.
GOLDSBORO, NC 27530
P: (919) 734-8828
F: (919) 736-4650

SIGNED APPROVAL: