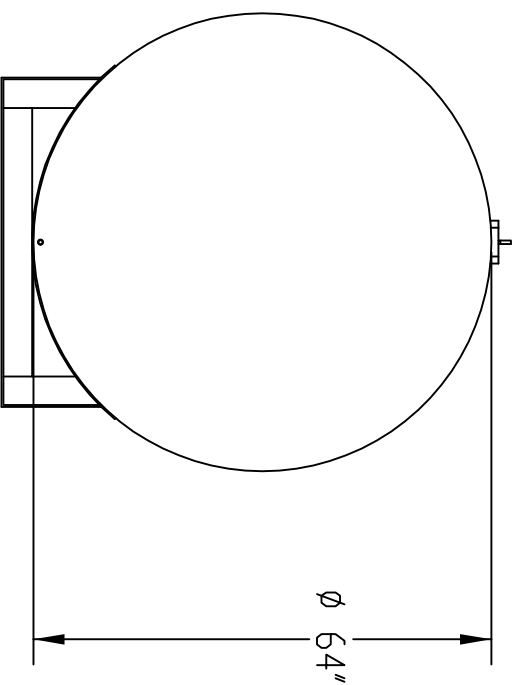
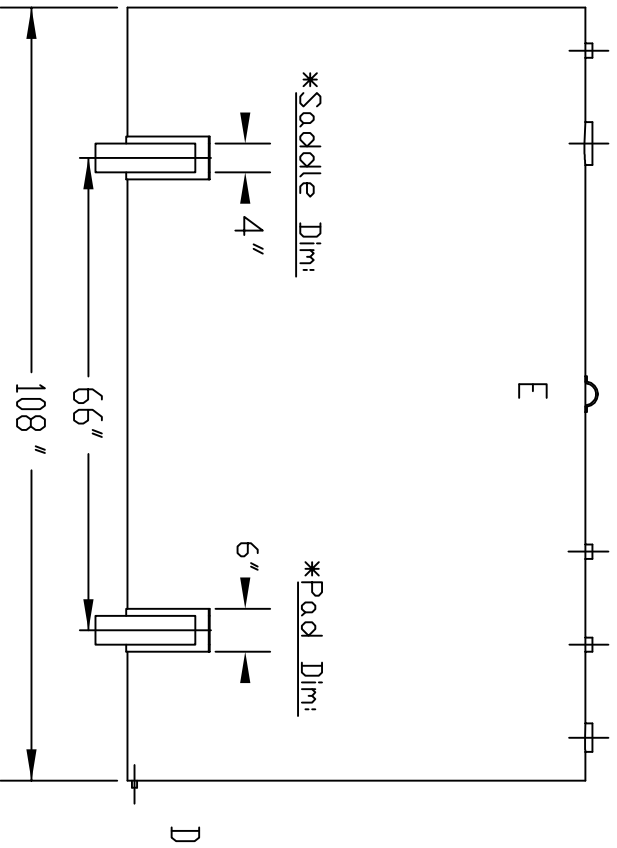


\*Typical 1/8" thick pad, fully sealed weld between tank and saddle.



REF. TO: STANDARD TANK  
DATE: 05/20/08

TITLE: **AS-1500-7P**  
SCALE: 1:48

DESCRIPTION: ABOVE GROUND, SINGLE WALL 7 GA. STEEL STORAGE TANK  
CAPACITY: 1,504 GALLONS  
FINISH: SURFACE PREP, SPCC, SP-3; ONE SPRAY COAT OF PRIMER; OPT FINISH  
APPROX. WEIGHT: 1,500 lbs ± 5%



LEGEND: ID - (QTY, OF OPENINGS) PART  
A - (3) 2" FNPT FLANGE  
B - (1) 6" EVENT FLANGE  
C - (1) 4" FNPT FLANGE  
D - (1) 3/4" FNPT FLANGE  
E - (1) LIFTING LUG

**TURNER TANKS**  
1500 HWY 117 S.  
GOLDSBORO, NC 27530  
P: (919) 734-8328  
F: (919) 736-4650  
SIGNED APPROVAL: